

# Our Partnership

Our Global Gifts will support five projects in three areas:

Health  
Education  
Transportation

*How will  
your congregation help?*



*Bishop Rinehart and President (Bishop) Golike taken during President Golike's visit to our synod in January 2010*

The Texas-Louisiana Gulf Coast Synod  
Evangelical Lutheran Church in America  
God's work. Our hands.



*Children in class at the village school*

Ten percent (10%) of our Global Gifts will help support ELCA Missionaries who oversee the projects the ELCA funds for accountability, transparency and integrity.

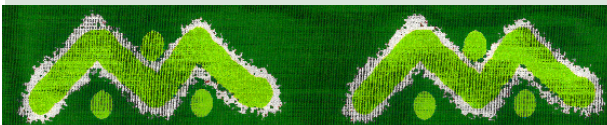
Gifts for global mission are NOT used for Synod or ELCA operating expenses or general budget.

100% of these gifts are used for mission.

**" Mbi yéké, mo to mbi " Esaie 6:8**

**Here am I; send me! Isaiah 6:8**

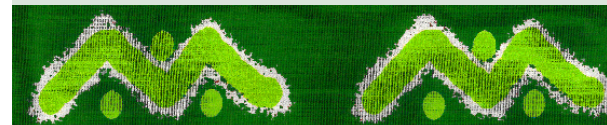
*This message, along with the Luther Rose graphic from the cover, are printed on cloth worn by the women for special occasions of the Lutheran Church in CAR.*



# Our Commitment



**Our  
Companion Synod**





Scholarship women Reine and Delphine - January 2010

## EDUCATION

**The Village Education Program**  
Synod goal: \$8,000 per year

Moving from poverty to sustainability through education. The Village Education Program provides teachers for elementary schools in rural communities where children would not have access to schools.

**The Martha and Mary Women's Center**  
Synod goal: \$5,000 per year

It has been said that if you educate one man, you educate one man, but if you educate a woman you educate the entire family. The Center provides training in literacy, basic health, job skills, and more, as well as a place for the Women for Christ (Lutheran women) to meet, study, and worship.

**Young Women's Scholarships**  
\$600 per year per woman  
(our goal is 5 women)  
Synod goal: \$3,000 per year

Scholarships pay for tuition, books and expenses beyond elementary school. Change the life of a young woman who will impact her own family and who may become a leader in church programs.



Emmanuel Health Center from the road - January 2010

## HEALTH CARE

**The Emmanuel Health Center in Gallo**  
Synod goal: \$5,000 per year

With one doctor for every 38,000 people, the need for local clinics is huge. This new Lutheran clinic hopes to reduce infant and maternal mortality, teach nutrition and AIDS education, and more.



Standing in the Women's Center courtyard wearing clothing bearing the Luther Rose as seen on the cover of this pamphlet



Motorcycles as a mode of transportation in CAR

## TRANSPORTATION

**Motorcycles**  
(6 motorcycles at \$2,500 each this year)  
Synod goal: \$15,000

Local pastors will be able to reach the scattered congregations they serve by riding a motorcycle, instead of walking. The motorcycles will also be used to transport people for health care.



Children looking through the village school wall

